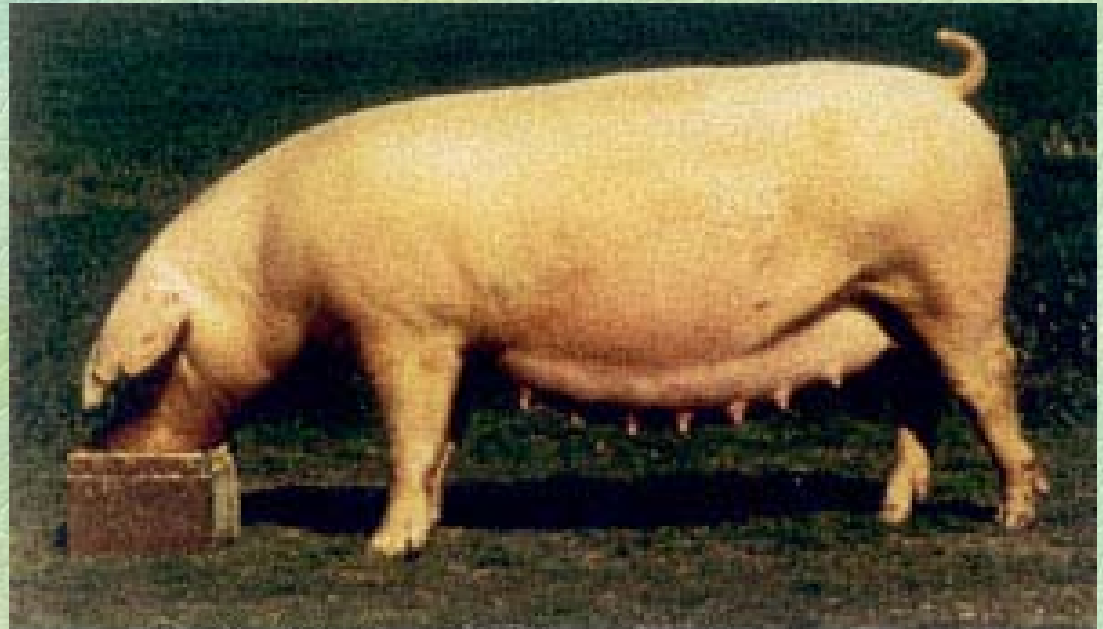


# Landrace

- Originated in Denmark
- Drooped ears
- Known for their maternal instincts
- White
- Long
- Flatter-topped than other breeds



provided by National Swine Registry

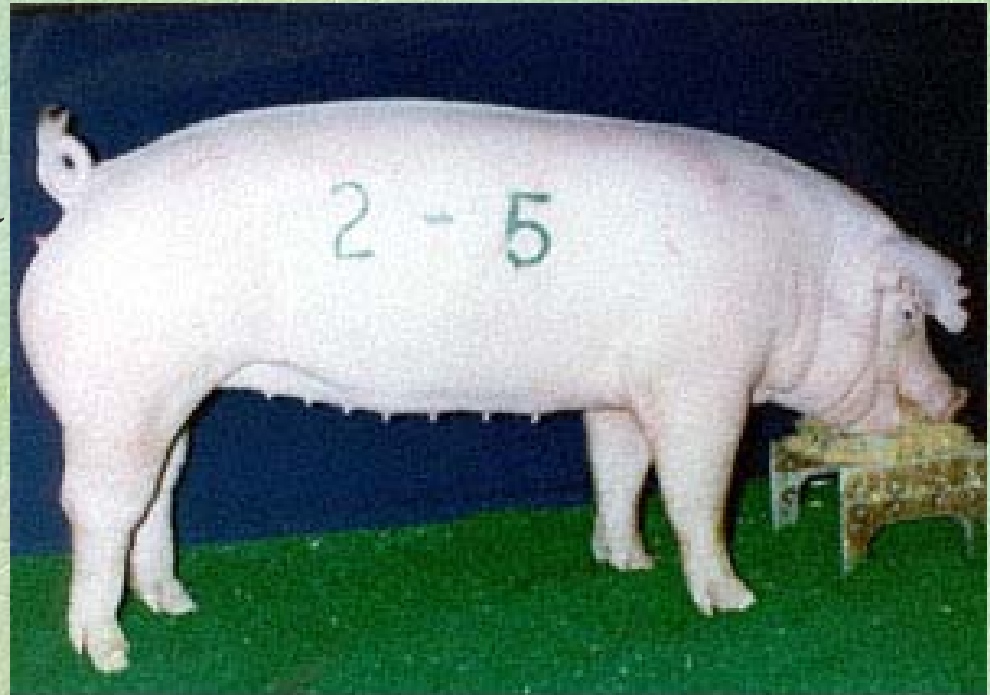
# Berkshire



- Originated in England
- Black with white legs, snout and switch
- Once kept at Buckingham Palace
- Known for producing high quality meats
- Erect ears

# Chester White

- Originated in Chester County, Pennsylvania
- White with drooped ears
- Mothering breed
- Known to produce large litters



provided by National Swine Registry

# Duroc



provided by National Swine Registry

- Originated in the United States
- Solid red
- Drooped ears
- Slight dish to the face
- Excellent meat type hog

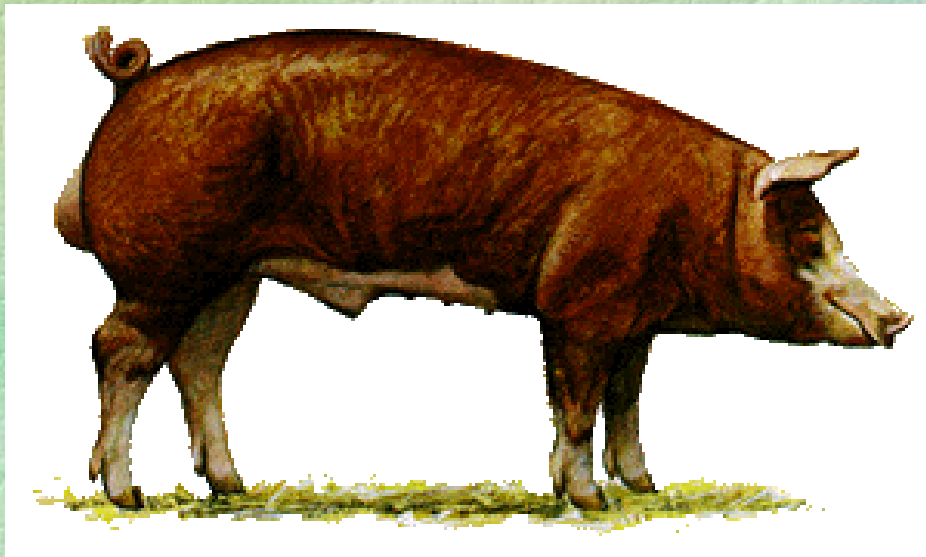
# Hampshire

- Originated in the United States
- Probably the oldest American breed
- Black with a white belt
- Small, erect ears
- Well-known meat breed



provided by National Swine Registry

# Hereford



- Originated in Missouri
- Developed from crossing Berkshires and Durocs
- Red with white face, legs and underline
- Medium-sized, drooping ear
- Long neck

# Poland China



- Originated in the US
- Noted for ability to easily gain weight
- Quiet dispositions
- Black with white snouts, legs and switch
- Generally poor mothers
- Drooped ears

# Spots

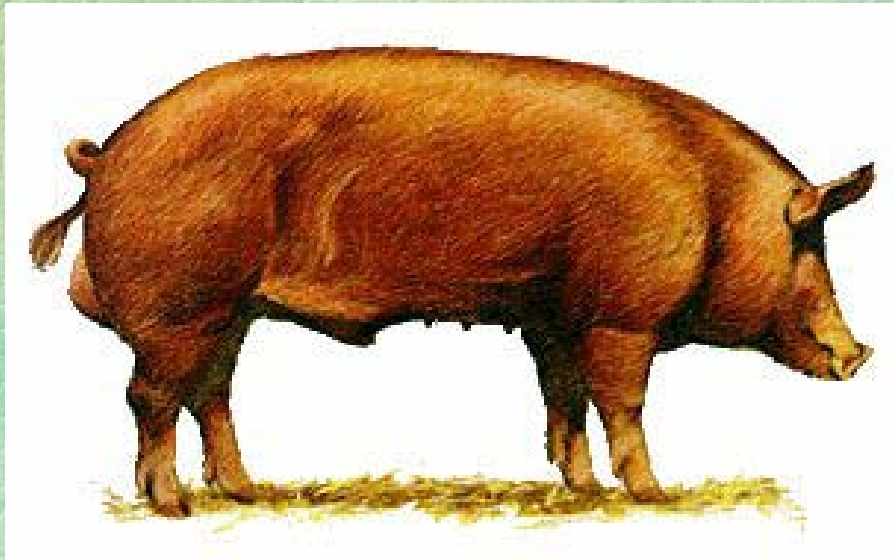
- Developed in Indiana
- Black and white spots
- Efficient feeders
- Noted for rapid weight gain



provided by National Swine Registry



# Tamworth



- Originated in Ireland
- Red in color
- A noted bacon breed
- Deep-sided
- Well-arched back
- Erect ears
- Good mothers
- Very active

# Yorkshire



provided by National Swine Registry

- Originated in England
- White
- Large, erect ears
- Known as “The Mother Breed”
- Produces large litters
- Bacon-type hog

# Meishan



- Originated from China
- Known for wrinkled face and skin
- Slow growers
- Puberty at 2.5- 3 mo
- Large Litters, 17